

HUNTER HOMES

live WITH HEART 



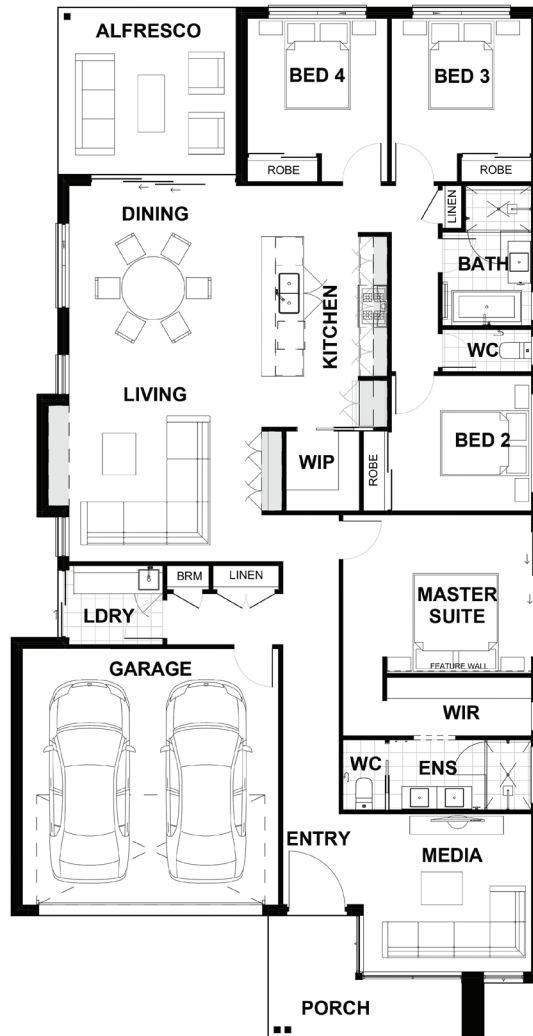
Newport 220



Total (sq.s.)	23.75	Width (m)	11.4
Total (m ²)	220.68	Length (m)	22.15

Description

The Newport 220 combines open plan living with ideal sleeping zones! Upon entering the home a media room awaits which can be converted to a second living area, study or entertainment hub. The master suite is located off the main hallway complete with a walk in robe and ensuite. The remaining three bedrooms are situated off the open plan living area at the rear of the home with a generous family bathroom. A stylish galley style kitchen with an island bench that overlooks the living and dining area which connects to a great sized alfresco. This home is practical living at its best.



Terms and Conditions: Images shown on this brochure are approximate and for illustration purposes only, these plans may not be drawn to scale. Façades and other images on this brochure may be shown as optional upgrades or not included, additional fixtures and finishes that are featured on this document may not be included in the base cost such as landscaping, tiling, decking, furniture, feature lighting, pools, driveways etc. Hunter Homes reserves the right to change plans and inclusions at any time. All designs that are developed remain the property of Hunter Homes Pty Ltd under copyright law & we retain & claim all rights to these plans. Changing plans by 50% or more does not avoid legal responsibility for a copyright breach.

1300 BUY HOME

See our website for Display locations
www.hunterhomesnsw.com

love YOUR HUNTER HOME